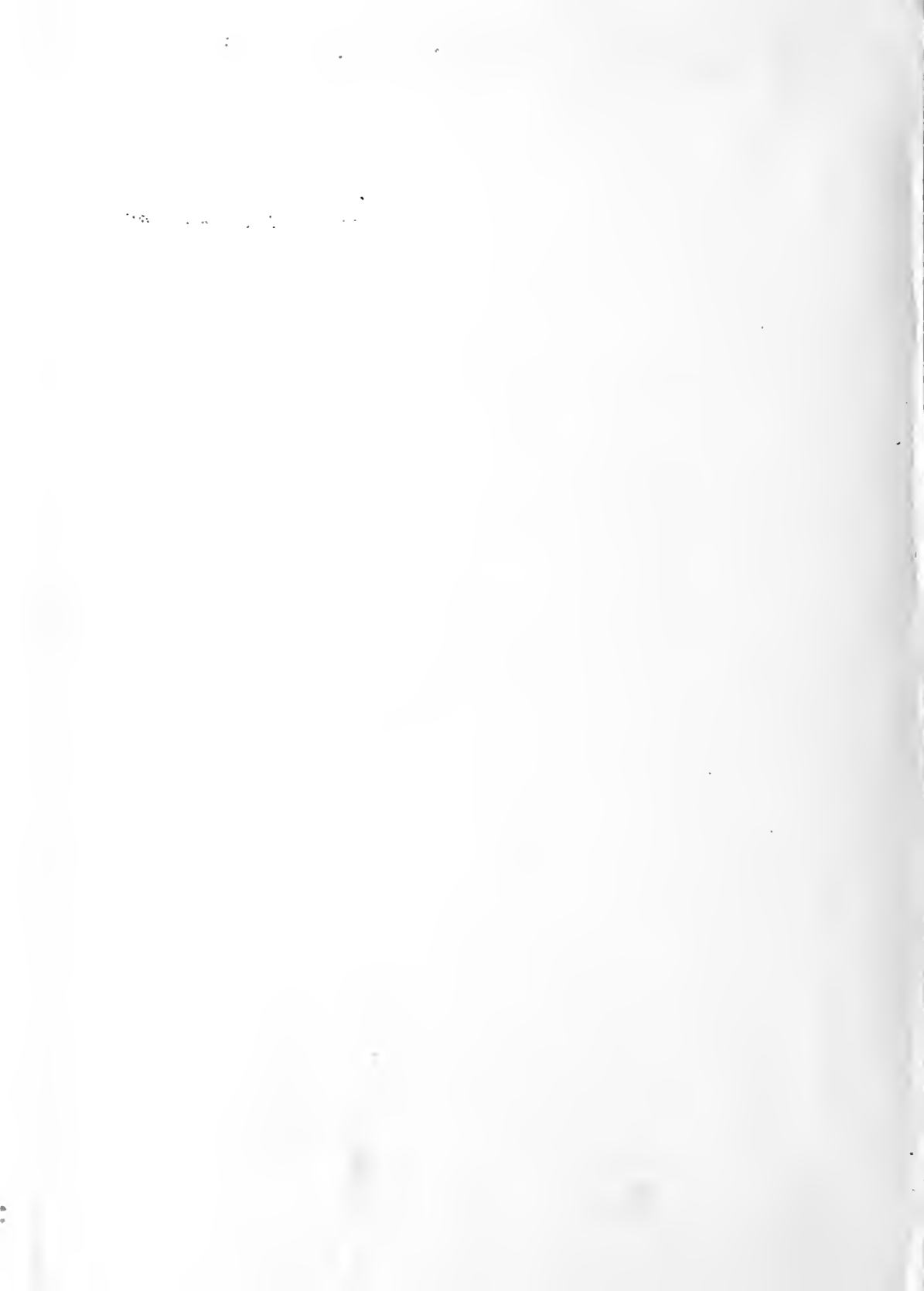


39

G  
R  
A  
D  
U  
A  
T  
I  
O  
N



1  
9  
3  
9



File COPY  
Do not remove

ARCHIVES  
SACRED HEART CONVENT  
BELMONT, NORTH CAROLINA 28012



THE  
GRADATIM  
1939

VOLUME VII

*Published by*

THE SENIOR CLASSES OF

Sacred Heart Junior College and Academy

BELMONT, NORTH CAROLINA

CLARICE WELLS  
*Editor-in-Chief*

ELMENA LATIMER  
*Business Manager*



# DEDICATION

TO YOU, THE MANY.

*Favored as we have been favored, who have  
lived happy school-lives at Sacred Heart and  
who have, as we hope some day to have, a  
treasure-chest all filled with time-yellowed  
souvenirs of Victory Hall.*

TO YOU, ALUMNAE.

*The Class of '39 dedicates this issue of*

THE GRADATIM.



# FOREWORD

*MAY this, our year book of 1939, mirror the true ideals of Sacred Heart and portray its high purpose of furthering the development of the spiritual, moral, and physical well-being of its students so that even the record of such achievement may spell the sweet word. SERVICE.*

# C O N T E N T S

BOOK ONE

COLLEGE

BOOK TWO

HIGH SCHOOL

BOOK THREE

ACTIVITIES

BOOK FOUR

ATHLETICS

BOOK FIVE

ADVERTISEMENTS





COLLEGE



*West Campus*



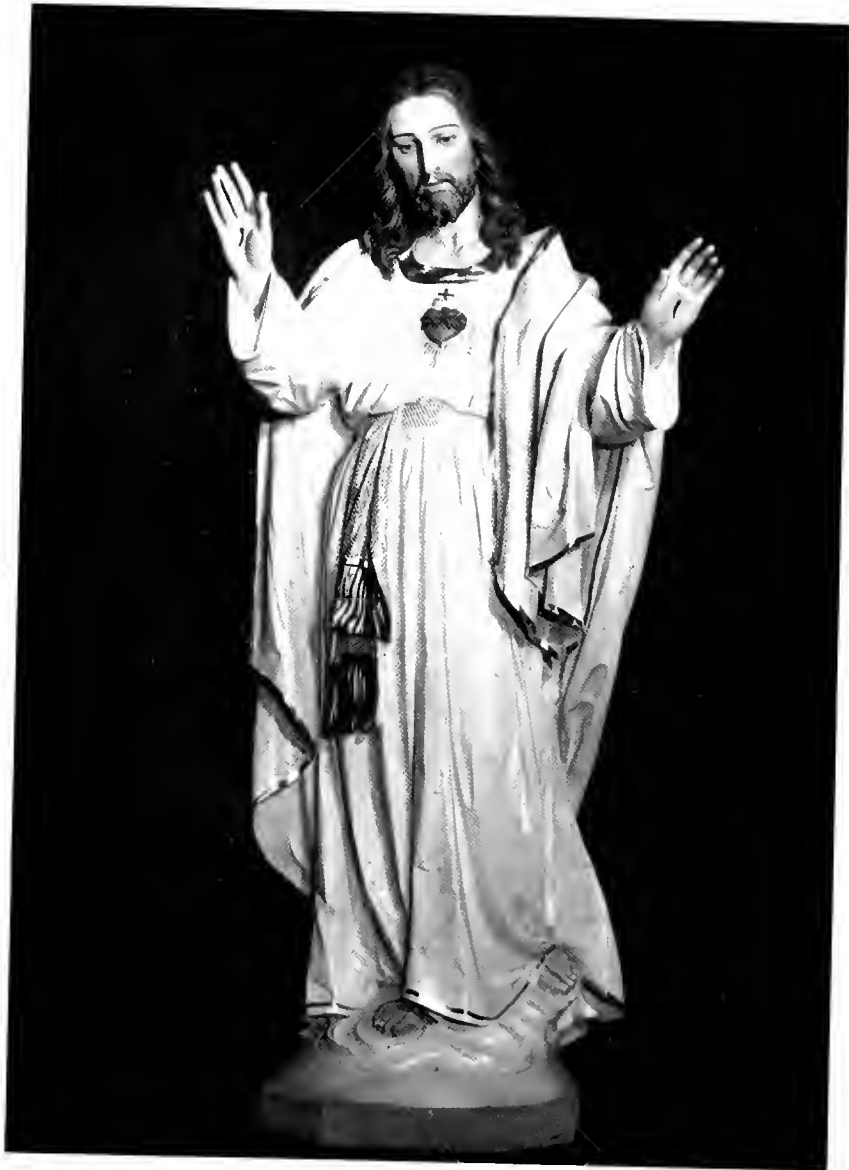
*South Campus*



*College Avenue*



*A Woodland Haunt*



*The Patron of Our School*

## GRADUATES



DORIS HOPE  
BELMONT, N. C.

Day Students' Association (1, 2),  
President (2); Curie Club (2);  
Alpha Kappa Alpha (2); Teasdale  
Book Club (2); Glee Club (2);  
Dramatic Club (2); Honor Society  
(1); Class Historian GRADATIM  
(2).



JEANETTE KENDRICK  
GASTONIA, N. C.

Glee Club (2), Business Manager  
(2); Dramatic Club (1, 2); Basket-  
ball Manager (2); Tennis Club (2);  
Alpha Kappa Alpha (2); Curie Club  
(1, 2), President (2); Assistant  
Editor GRADATIM (2); Teasdale  
Book Club (2); Day Students'  
Association (1, 2).

# GRADUATES



ELMENA LATIMER  
BELMONT, N. C.

Class President (2); Le Cercle Français (1); Dramatic Club (1, 2), President (1); Tennis Club (2); Curie Club (1, 2), Secretary and Treasurer (2); Alpha Kappa Alpha (2); Business Manager GRADATIM (2); Teasdale Book Club (2); Day Students' Association (1, 2); Glee Club (2).

FRANCES PRATT  
BELMONT, N. C.

Day Students' Association (1, 2); Alpha Kappa Alpha (2), Secretary and Treasurer (2); Class President (1); Teasdale Book Club (2); Dramatic Club (1, 2), President (2); Glee Club (2); Le Cercle Français (1); Assistant Editor GRADATIM (2).



---

---

# GRADUATES



PAULINE RAY  
ASHEVILLE, N. C.

Sodality (1, 2); Class Secretary (2); Le Cercle Français (1, 2); Choral Club (1); Glee Club (2); Basketball (1); Tennis Team (1, 2); Curie Club (1, 2); Alpha Kappa Alpha (2); Teasdale Book Club (2), Vice-President (2); Assistant Editor GRADATIM (2); Softball Team (1); Dramatic Club (1).

MADGE SPARKS  
BELMONT, N. C.

Day Students' Association (1, 2); Curie Club (1, 2); Alpha Kappa Alpha (2); Teasdale Book Club (2); Class Poet. GRADATIM (2); Class Treasurer (2); Le Cercle Français (2).

## GRADUATES



CLARICE WELLS  
MT. HOLLY, N. C.

Class Vice-President (2); Editor-in-chief GRADATIM (2); Le Cercle Français (1); Basketball (1, 2); Curie Club (1, 2); Alpha Kappa Alpha (2); Honor Society (1, 2); Monogram Club (1, 2), President (2); Teasdale Book Club (2); Day Students' Association (1, 2); Glee Club (2), Secretary and Treasurer (2).



PAULINE WATERS  
LINCOLNTON, N. C.

Le Cercle Français (2), President (2); Day Students' Association (1, 2); Associate Editor GRADATIM (2); Teasdale Book Club (2); Alpha Kappa Alpha (1, 2), President (1, 2).

---

---

## CLASS HISTORY

Could each of us have been gifted with the power of Melampus, we would have known the pleasant relationship that awaited us at Sacred Heart in 1937 when we stepped from the valley of "the grades," and we would have endured these early trying years at least with resignation. However, we would have been deprived of the surprises that each new adventure brought with it and the thrill that always surrounds the unknown.

In our Freshman year we were twenty-five in number. Each was eager and hopeful, and perhaps a little complacent, too, in the newly-acquired sense of superiority, for, after all, was not this a great milestone after eleven years of concentrated labor? This egotistical outlook was not to remain long with us, for there were sophomores around who had been along these same roads, and who, even unintentionally, made us realize that we still had many things to accomplish, and that to begin was not, in any sense, to achieve. So with determination and diligence we set about our Freshman work.

But all our time was not restricted to Labor, for soft-footed Pleasure crept in too, and filled the intervals with varied activities. Plays, parties, dances, picnics, banquets, and athletics claimed their allotment and, after such "breaks," we possessed renewed vigor for our scholastic undertakings. So, under capable guidance, we learned to devote the correct proportional time to study and entertainment, and to turn in times of stress to

"That Light whose smile kindles the Universe,  
That Beauty in which all things work and move,  
That Benediction which the eclipsing Curse  
Of birth can quench not, that sustaining Love  
Which through the web of being blindly wove  
By man and beast and earth and air and sea,  
Burns bright or dim, as each are mirrors of  
The fire for which all thirst."

When we returned as Sophomores we had even more of the old ardor, and we expended it, if not always wisely, at least with a stroke in that direction.

This year has marked many events of importance to us, and each small matter to which we have had a part has taken on a new and deeper meaning with the realization that it was for the last time. We are reluctant to leave behind so many friends and the school we have learned to love, but we will always have pleasant memories to inspire us to heights worthy of the ideals that the institution has instilled into our hearts.

—DORIS HOPE.

## CLASS POEM

As blocks of rough and unhewn stone  
Our lives begin their quest.  
With Time and Fate we stand alone  
To pass or fail the test.

The Muse, upon Olympia posed,  
Will guide the unskilled hand  
Along the curves of time of those  
Who seek a firmer stand.

Onward alway and never back  
The sculptor's chisel goes:  
And when at last Fate makes her track  
Eternal marks she shows.

The Rock is hard and priceless, too,  
From which our life is wrought,  
So carefully we all must hew  
This Thing that Blood has bought.

When Life's unveiled by Death's cold hand  
Will yours reveal the best  
Of all the things at your command;  
Or will you fail the test?

—MADGE SPARKS.

FRESHMEN

DOROTHY ABERNATHY  
Mt. Holly, N. C.



FRANCES ARMSTRONG  
Mt. Holly, N. C.

HELEN BROWN  
Lexington, N. C.



IRMA BURNS  
Belmont, N. C.

SARAH BYNUM  
Lincolnton, N. C.



MARY CURLEE  
Gastonia, N. C.

CONSUELO DEL CUETO  
Cienfuegos, Cuba



EDITH GALLAGHER  
Gastonia, N. C.

HELEN HAND  
Charlotte, N. C.



LUTELLE HANEY  
Belmont, N. C.



MARY E. HOLTZCLAW  
Cramerton, N. C.

---

---

# FRESHMEN

ELEANOR JENKINS  
Gastonia, N. C.



VIRGIE LUTZ  
Belmont, N. C.

ANNE MCLEAN  
Belmont, N. C.



MARY ELIZABETH MOOR  
Anderson, S. C.

ELLEN NEW  
Gastonia, N. C.



MARGARET O'MEARA  
Brooklyn, N. Y.

MARGARET PARTRICK  
Clinton, N. C.



BETTY PRESSLEY  
Belmont, N. C.

SUSAN RICHARDSON  
Gastonia, N. C.



LOUISE SMITH  
Belmont, N. C.

DOROTHY WHISENANT  
Belmont, N. C.





HIGH SCHOOL

# SENIORS



VIOLETTA DEL CUETO  
CIENFUEGOS, CUBA

Teresiano (1); Cienfuegos High School  
(2, 3); Sodality (+); Literary Society (+);  
Glee Club (+); Tennis (+); Softball (+).



JOY GILBERT  
HENDERSONVILLE, N. C.

Flat Rock High (1, 2); Literary Society  
(3, 4); Class Poet GRADATIM; Tennis (+);  
Glee Club (+); Softball (+).



MARGARET HARRISS  
CHARLOTTE, N. C.

O'Donoghue (1); Central High (2, 3);  
Class Treasurer (+); Sodality (+); Literary  
Society (+); Treasurer (+); Class Historian,  
GRADATIM; Honor Society (+); Tennis  
(+); Softball (+).



## SENIORS

DOROTHY HOGAN  
CHARLESTON, S. C.

Memminger High School (1): Sodality (2, 3, 4); Music Club (3, 4); Class Secretary (3); Class President (4); Le Cercle Français (2, 3); Honor Society (3); Literary Society (3, 4); Glee Club (4); Class Prophet (4).



MARIA MARISTANY  
HABANA, CUBA

Nuestra Señora del Rosario (1); St. Theresa School (2, 3); Sodality (4); Glee Club (4); Tennis (4); Literary Society (4).



MARY FAY SPENCER  
GASTONIA, N. C.

Gastonia High School (1, 2); Literary Society (4); Le Cercle Français (3).



# CLASS HISTORY

*Here and there at Sacred Heart Academy during my four years of High School.*

## SCENE I

Campus, opening of school September, 1935. (Girls are arriving from different parts of the United States, from Cuba, Guam, and Canada. Tillie has just dropped her bags on the ground outside the main building and is greeting her old classmates.)

TILLIE: Hello, everybody.

PAULINE: Glad to see you again, Tillie.

TILLIE: I'm glad to be back. I've been at the Academy since I was a little girl. My great aunt was a nun here, and my mother went to school here, too, so I feel very much at home.

BRIDIE: We were just talking about the subjects we are going to take, the clubs we are going to join, and the basketball team. Do you know that we are going to try for the tournament this year?

TILLIE: (Very seriously). I'm in high school now, girls, and I shall have to decide upon my vocation. (Laughing). I am already so well-trained in religion that I think my education would be wasted if I did not become a Sister.

MARY C.: Wait until we have our first dance and I think you'll change your mind.

TILLIE: Will you girls please take my bags to the dormitory; I must see the Directress.

## SCENE II

Auditorium, June, 1936. (Tillie and Mary Catherine are seated side by side in one of the front rows. The processional has ended and the Abbot, priests, graduates, etc., are taking their places on the stage.)

MARY C.: (Whispering) Don't the Seniors look beautiful in their white caps and gowns, and aren't their bouquets lovely?

TILLIE: I shall miss them next year for I have known most of them a long time. This certainly has been a short year. We had just settled down to study when the Hallowe'en party came. Then we began some real study for the first quarterly examinations, which were over just in time for the Thanksgiving dance. Will you ever forget that! When we were able to breathe freely again, it was time to leave for the Christmas holidays. After Christmas, the time dragged for a while as our only intermission from study was an occasional movie.

MARY C.: (Interrupting) Don't forget the skating parties and the Club entertainments.

TILLIE: (Continuing) Then Lent came. I did not deny myself much, but Father S. says it is better to do positive things, anyway, so I went to Mass every morning and attended all the Holy Week services at the Abbey. We are fortunate in having a Benedictine monastery near our school so we can see all the beautiful ceremonies of the Church. The time has just flown since Easter.

GIRL IN BACK: (touching Tillie's arm). Sister says, "Please stop talking. Father Abbot is going to speak."

## SCENE III

Dining Hall, September, 1936. (The Sophomores are seated at a table in a corner of the room frankly questioning a newcomer.)

MARY: Where is your home, Dorothy?

DOROTHY: (In a slow, drawling voice) Charleston.

EMMA: (a Cuban girl) Where is that?

DOROTHY: Charleston! Why it's in South Carolina—the most historical city in the United States.

EMMA: (Much impressed) I hope we shall be good friends, Dorothy.

MARY: I understand you are an excellent musician, Dorothy. Will you play something for us after dinner?

DOROTHY: I shall be glad to do so later, but first I wish to explore these buildings and surroundings. They are beautiful and look interesting.

MARGARET: Every Sunday we go up to the Abbey Cathedral for the ten o'clock Mass and every Saturday we take a walk to different places, so you will soon get plenty of scenery, if that's what you like. Have you ever seen Lake Lure?

EMMA: Sister is going to ring the bell I shall see you on the campus, Dorothy.

#### SCENE IV

Dormitory, April, 1937. (The girls are dressing for the Passion Play).

JOY: I suppose the Centurian would be very much amused if he could gaze on my impersonation of him.

PAULINE: I wonder what St. Joseph thought of my impersonation of him at Christmas!  
(Dorothy enters room dressed as the Blessed Virgin)

BRIDIE: Doesn't she look holy?

MARY: (Looking out through window) I see some people arriving. Let's hurry to the auditorium.

#### SCENE V

Gymnasium, November, 1937. (Joy and Margaret are among the spectators of the first basketball game of the season).

JOY: What do you think of our new coach?

MARGARET: Not being a member of the team, I do not know him personally, but the girls like him and that means they will co-operate with him. He is very particular about regular practice and all the rules must be strictly obeyed.

JOY: There they go for the last quarter, and the score is 37-7 in our favor.

(Much cheering from the crowd as S. H. A gains the victory.)

#### SCENE VI

Lawn in front of the Chapel, May, 1938. (The Abbot, priests, Sisters, children, and people of the community have formed a procession and are wending their way slowly down the path to the Shrine of Our Lady in the woods. Two little girls are carrying the crown for the Blessed Virgin, which is to be placed on her head by the girl who has received the highest honors in conduct and scholarship).

SISTER: (Walking beside the choir). Please sing your best this evening, girls. The others are depending on your lead.

GIRLS: We will, Sister.

#### SCENE VII

Tennis Court, September, 1938. (Some of the girls are seated on the benches becoming acquainted with two Cuban girls who have just arrived to join the Seniors).

DOROTHY: (Interrupting the two girls who are speaking Spanish). If you girls wish to learn English you should forget Spanish for a while.

MARIA: That's what Mother says, but I can express myself much better in Spanish.

VIOLETTA: Tu sabes, me perdi en el colegio hoy, no estoy acostumbrada al edificio todavia'

#### SCENE VIII

Auditorium, Class Night, May, 1939. (The Seniors have just finished a little entertainment. They are now in back of the stage very tearful and unhappy).

JOY: Just think! This is the last time we shall ever be on the stage here except at Commencement.

MARGARET: (Practically.) Unless you return to attend college.

DOROTHY: The audience is waiting for us to say farewell. Let's go out and sing that little verse we have been practicing.

(Seniors appear on the stage and sing together)

Goodbye, dear friends—adieu!  
God bless you, we fondly pray  
Our hearts will ever be with you  
Though we're going far away.

—MARGARET HARRISS.

## CLASS PROPHECY

It happened the spring that I was asked to christen the great steamer now called "The Queen Isabelle," and, if I mistake not, it was April. I remember that because all hedges were white as I sped north to Washington. The wife of the Cuban ambassador, my one-time schoolmate, Violetta Del Cueto, met me in Washington, and we had enjoyable times together. But that was after the accident, for there *was* an accident, you know. Let me tell you of it:

When I swung the bottle of champagne, through some misadventure it splurged back upon me, and for a time I suffered from "suspended animation." But only for a time. (How was that? Please do not interrupt or I will lose my trend of thought completely!) The next thing I remember a little man—no so little you know but *short*—stepped up to me.

"Hurry up!" he said. "I've waited long enough already."

"To whom are you speaking?" I said. "We haven't even been introduced!"

"As if you didn't know me!" he said. "Why, I'm the Bachelor!"

"The Bachelor!" I said.

"The Bachelor," he repeated. "Perhaps your next remark will be that you have never heard of 'The Gentleman in the Moon!'"

"I have heard of 'The Man in the Moon'," I said.

"None of your wisecracks," he said, "or I'll not take you there!"

I was about to ask where when he hurried me into some sort of conveyance, the name of which I have never been able to ascertain. It was unlike anything I have ever seen.

"Don't talk so much," he said.

"Why, I haven't said even a word," I protested.

"Well, you were *thinking*," he said, "and when women *think* it is just as if they talked. That's why I have remained a bachelor. I couldn't stand the noise!"

After some travel, we stopped at a star that resembled an immense concert hall. All the light that shone forth, I was to discover, came from the violinist, Maria Maristany, whom I saw, even before we had stopped.

"Why, what an honor!" I called out, but the audience, infuriated, started hissing me so loudly that I was forced to beg the little man to step on whatever-it-was and get us out of there, which he did.

"What a place she has!" I exclaimed.

"You were going to say 'in the sun'," he said, "and *that* would be untrue. This place is very many millions of miles from the sun. Are you good at figures?"

I changed the subject while he pulled out an adding machine and worked it with—his toes!

---

## CLASS PROPHECY — Continued

Soon we stopped at what seemed to me a hospital star. We stepped off, and not knowing what I was doing there, I felt, and I am sure I looked, utterly foolish, until the little man pointed to a desk on which was a placard bearing the title, "Dr. Harriss." There were so many degrees after the name that I was beginning to get dizzy when my companion unceremoniously hurried me off elsewhere.

"Can't I talk with Margaret?" I said.

"You mean with *Dr. Harriss*," he answered. "Be careful of your manners, or I'll be sorry that I invited you!"

"Well," I said, but we were off without much more ado.

"The next trip is rather long," he said, "and you may read these poems for relaxation." He pulled a dog-eared volume from one of his tiny pockets. It had been folded and re-folded, and its title was "Poems by Joy Gilbert."

"They are the finest sonnets since Shakespeare," he said.

I noticed the first was called "Moonlight Sonata." "That's why he likes them so much," I thought, but I said nothing. However, upon reading them, I discovered that they were very fine indeed, and I was very proud of the fact that I had been one of Joy's classmates.

"In just a few minutes I'll have to leave you," said my escort, "for Mr. Sun is becoming very impatient. I declare, sometimes I think he wants to be the whole show himself," and he sighed deeply.

We soon arrived at a beautiful little cottage.

"Another of your friends?" said the Man-in-the-Moon.

I looked around, but could see only a lovely little child on the porch.

"Mama thought you never would come," she said.

"Who are you?" I asked.

"Sybil," she said simply and smiled at me. There was something in that smile I knew. A lady hurriedly opened the door and embraced me before I knew it.

"Why, it can't be," I said. But it was. It was Mary Fay Spencer of happy memory. At least that used to be her name, but she told me she had married the Postmaster General of the United States and that her hobby was stamp-collecting. Mary Fay, of all people!

"Come along," said Mr. Moon Man, "or I'll leave you in mid-air." With that he started his funny motor again, and, although he did not mean to do it, I am sure, he—went off without me! I went off, too, off in the true sense indeed. Down, down, down. I went, until finally, with a jerk, I opened my eyes to see Violetta gazing anxiously into them.

"Never again agree to christen a ship," she said, "until you can throw a bottle!"

"What bottle?" I said. "What ship?"

—DOROTHY HOGAN.

# LAST WILL AND TESTAMENT

STATE OF NORTH CAROLINA,  
COUNTY OF GASTON,  
CITY OF BELMONT.

We, the members of the Senior Class of Sacred Heart Academy, 1939, being about to enter the arena of life, and being fearful that the dangers thereby entailed may result in an untimely demise, do hereby declare the following to be our last Will and Testament:

## ARTICLE I

To the Faculty we leave our profound gratitude for all they have done towards leading us up the slippery heights of erudition, for their patience with our numerous shortcomings, and for their ever-ready sympathy.

## ARTICLE II

To our Directress we give our appreciation for her guidance, for her ability to help us see the sunny side no matter what the Weather Man predicted, and for her tender care of us.

## ARTICLE III

To the Juniors we bequeath—with reluctance be it confessed—all the Senior rights and privileges, hoping they will not abuse them, or even use them more than is necessary.

## ARTICLE IV

To the Sophomores we leave our "get-up-and-go" manner. With it may they "go places and see things."

## ARTICLE V

To the Freshmen we bequeath our ability to get through successfully, and even triumphantly, four years of book acquaintanceship.

## ARTICLE VI

I, Joy Victoria Gilbert, do will and bequeath to Mary Catherine Kabas, for her encouragement, and for the edification of her neighbors, my steady progress in Latin. It is not as "dead" as they claim. Mary Catherine, so be of good heart and carry on.

I, Margaret P. Harriss, leave to Dolly Dunn my sisterly affection and a large portion of my care for relatives. Keep the family tree well watered, Dolly.

I, Mary Fay Spencer, do will my knowledge of Chemistry to Bridie Madden. If it proves to be more than she needs I would advise her to share it with her needy neighbors.

I, Maria Louise Maristany, give and bequeath my earnestness and interest in studies to Nelida Molina with the hope that she will use both to the best advantage and become in time the model student that the donor is.

I, Violetta Adelaide Del Cucto, do will the one-half of my artistic talent that I shall not need hereafter to Anita Maristany. Should she be disinterested in the bequest, she may turn said donation over to the Directress for the upkeep of the school in general.

I, Dorothy Claire Hogan, do will and bequeath my tenacity of purpose to Margaret Reiser. I trust this gift will enable her to secure a place "in the sun."

IN WITNESS WHEREOF, we hereunto set our hand and seal this seventh day of June, A. D. Nineteen Hundred Thirty-Nine.

MARY FAY SPENCER.

Witnesses:

BOOTY JACKSON (the cat)  
LOUISE (Dot's elephant)  
FERDINAND (the bull)

## COMMENCEMENT DAY

"The end of a trail" you say? Ah, me!  
The end of a trail for whom?  
Why does it end in this blossomy sea,  
Perfumed in the spring's dear noon?

The fall is the time that the end should call  
It's clarion note on the breeze.  
Why should things end at the start of things—  
With the budding forth of the trees?

June is no time for the farewell note  
And yet how it falls on the rose!  
Why can't we finish on some gray day  
When the wind in a great tumult blows?

O you who go forth in the quickening sap  
When the light is a blaze at the noon,  
Don't say with regret that the time's not best,  
That farewells can't be said in a June!

For you're heading for uplands high, my dears,  
And the light must be full in the East,  
Grey skies and the cold night harbor fears,  
But yours is a Springtime Feast.

—JOY GILBERT.







# ACTIVITIES

---

---

# GRADATIM STAFF



CLARICE WELLS  
*Editor-in-Chief*

ELMENA LATIMER  
*Business Manager*



PAULINE WATERS  
*Assistant Editor*

DORIS HOPE  
*Class Historian*



EDITH ADAMS  
*Athletic Editor*

MADGE SPARKS  
*Class Poet*



MARGARET HARRISS  
*Class Historian*

DOROTHY HOGAN  
*Class Prophet*



MARY FAY SPENCER  
*Class Testatrix*

JOY GILBERT  
*Class Poet*



## PRESIDENTS' FORUM

ELMENA LATIMER	<i>Sophomore Class</i>
BETTY PRESSLY	<i>Freshman Class</i>
MARGARET O'MEARA	<i>Teusdale Book Club</i>
JEANETTE KENDRICK	<i>Curie Club</i>
PAULINE WATERS	<i>Alpha Kappa Alpha</i>
FRANCES PRATT	<i>Dramatic Club</i>
EDITH GALLAGHER	<i>Monogram Club</i>
EDITH ADAMS	<i>Glee Club</i>
DORIS HOPE	<i>Day Students' Association</i>
PAULINE RAY	<i>Le Cercle Français</i>
DOROTHY HOGAN	<i>Meynell Literary Society</i>
DOROTHY HOGAN	<i>Senior High School Class</i>
ANNIE TATUM	<i>Junior High School Class</i>
EVA MAE MOSES	<i>Sophomore High School Class</i>
MARY C. KABAS	<i>Freshmen High School Class</i>



## THE HONOR SOCIETY

The Honor Society is composed of members who, by unswerving fidelity to scholastic endeavor, have attained the grade of ninety or over. This Society has done much to uphold the scholastic standards of the school.

This year ten young ladies were fortunate enough to reach this coveted goal.

### MEMBERS

DORIS HOPE

FRANCES PRATT

CLARICE WELLS

EDITH ADAMS

MARGARET HARRISS

MARGARET REISER

ANNIE TATUM

ANITA MARISTANY

MARY HEDRICK

ANNE CLARK

## TEASDALE BOOK CLUB

*"Oh, better than the minting of a golden-crowned king  
Is the safe-kept memory of a lovely thing."*

—SARAH TEASDALE.

A new institution at Sacred Heart this year is the Teasdale Club, an organization formed for the benefit of the college English classes and destined to accomplish much.

The objective of the club is the stimulation to literary activity and the attainment of a keener literary appreciation. This two-fold aim has been accomplished, we feel, and is but the starting point for greater results that the members hope to attain during the next school year, by the addition of a Creative Writers' Division.

### MEMBERS

*First Row*  
 ELEANOR JENKINS  
 FRANCES ARMSTRONG  
 MADGE SPARKS  
 PAULINE RAY  
 MARGARET O'MEARA  
 IRMA BURNS  
 ELLEN NEW  
 EDITH GALLAGHER  
 MIRIAM WELDON  
 DORIS HOPE

*Second Row*  
 HELEN HAND  
 HELEN BROWN  
 LUTELLE HANEY  
 SARAH BYNUM  
 MARY E. HOLTZCLAW  
 FRANCES PRATT  
 SUSAN RICHARDSON  
 ANNE MCCLEAN  
 ELMENA LATIMER  
 MARY E. MOOR

LOUISE SMITH  
 BETTY PRESSLY  
 MARGARET PARTRICK  
 CONSUELO DEL CUETO  
 VIRGIE LUTZ  
 DOROTHY WHISENANT  
 CLARICE WELLS  
 DOROTHY ABERNATHY  
 JEANETTE KENDRICK  
 PAULINE WATERS  
 MARY CURLEE



*Page Thirty-three*



## CURIE CLUB

The Curie Club has been very active since its organization two years ago. Membership in this club is limited to college students who have had at least one year of Chemistry and are interested in furthering their knowledge of this fascinating subject. The primary purpose of this organization is to arouse interest in the progress of scientific research. This objective has been achieved mainly through lectures, educational trips, and students' projects.

### MEMBERS

#### *First Row*

MIRIAM WELDON  
 MARY CURLEE  
 MARGARET O'MEARA  
 CONSUELO DEL CUETO  
 DORIS HOPE  
 MADGE SPARKS

#### *Second Row*

ELEANOR JENKINS  
 BETTY PRESSLY  
 ANNE MCCLEAN  
 DOROTHY ABERNATHY  
 SUSAN RICHARDSON  
 JEANETTE KENDRICK

#### *Third Row*

PAULINE RAY  
 MARY E. HOLTZCLAW  
 ELMENA LATIMER  
 VIRGIE LUTZ  
 EDITH ADAMS  
 CLARICE WELLS

# ALPHA KAPPA ALPHA

The Alpha Kappa Alpha is a cultural society organized for those especially interested in raising and broadening the level of their appreciation of the good, the beautiful, and the true. To further their aim, the members have secured lecturers, sponsored concerts, attended plays and recitals, and visited museums. A taste for the finer things of life has been engendered and in addition much enjoyment has been derived from the many trips.

## MEMBERS

### *First Row*

PAULINE WATERS  
EDITH ADAMS  
FRANCES PRATT

PAULINE RAY  
DORIS HOPE  
CONSUELO DEL CUETO

### *Second Row*

ANNE MCLEAN  
ELMENA LATIMER  
MADGE SPARKS  
SUSAN RICHARDSON  
VIRGIE LUTZ

### *Third Row*

FRANCES ARMSTRONG  
JEANETTE KENDRICK  
ELLEN NEW  
CLARICE WELLS  
BETTY PRESSLY  
SARAH BYNUM





## SODALITY

The Sodality of the Blessed Virgin still continues to hold the foremost place in the spiritual life of Sacred Heart. The high moral tone of the school, and the splendid spirit of hard work and comradeship which exists among the students, must be ascribed in great part to the example set by the Sodalists. They realize that they are Children of Mary and that devotion to her should be prominent in their lives.

### MEMBERS

*First Row*

BRIDIE MADDEN  
 MARY KATHERINE KABAS  
 VIVIAN HAVERTY  
 CONSUELO DEL CUETO  
 MARIE MARISTANY  
 VIOLETA DEL CUETO  
 MATTIE VAUGHAN  
 ANITA MARISTANY  
 MARTHA SEAY

*Second Row*

MIRIAM WELDON  
 NELIDA MOLINA

MARGHARITA MARUS  
 DOROTHY HOGAN  
 MARGARET REISER  
 PAULINE RAY  
 EDITH ADAMS  
 ANNE CLARK  
 MARGARET PARTRICK  
 MARGARET HARRISS  
 EDITH GALLAGHER  
 FRANCES SULLIVAN  
 TILLIE SMITH  
 MARGARET O'MEARA



## DAY STUDENTS' ASSOCIATION

With a sincere desire to increase interest in the school activities, the day pupils formed this association. Since its organization, the students have been more closely united, thereby proving that the Club is of immense benefit to Sacred Heart.

### MEMBERS

#### *First Row*

BETTY PRESSLY  
SUSAN RICHARDSON  
MARY EVELYN GRASS  
DOROTHY WHISENANT  
DOROTHY ABERNATHY  
ANNE TIPTON  
FRANCES ARMSTRONG

#### *Second Row*

ANNE MCCLEAN  
MARY FAY SPENCER  
MARY E. HOLTZCLAW  
SARAH BYNUM

LUTELLE HANEY  
HELEN HAND  
ELMENA LATIMER  
THEDA DAGENHART

#### *Third Row*

PAULINE WATERS  
JEANETTE KENDRICK  
VIRGIE LUTZ  
IRMA BURNS  
FRANCES PRATT  
LOUISE SMITH  
MADGE SPARKS  
DORIS HOPE

#### *Fourth Row*

ANNIE TATUM  
MARY HEDRICK  
MARY CURLEE  
MARY E. PALMER  
PAULINE BOYTER

#### *Fifth Row*

CLARICE WELLS  
EVA MOSES  
ELEANOR JENKINS  
MARJORIE ROPER  
MARGARET MCKNIGHT  
MARGARET DAVIS  
BEA SUMNER





## LE CERCLE FRANCAIS

Le Cercle Francais is composed of students who wish to increase their knowledge of French in order to appreciate French literature to the fullest extent. Proficiency in the language and familiarity with the customs of another country is the surest means of engendering a keener interest in its people and a kinder feeling towards them.

### MEMBERS

*First Row*  
MARTHA SEAY  
MATTIE VAUGHAN  
ANITA MARISTANY

*Second Row*  
MARGHARITA MARUS  
HELEN HAND  
DOLLY DUNN

*Third Row*  
NELIDA MOLINA  
MARY E. PALMER  
MARY CURLEE  
MARJORIE ROPER

EDITH GALLAGHER  
MARGARET REISER

*Fourth Row*  
MADGE SPARKS  
PAULINE WATERS  
BRIDIE MADDEN  
ANNE TIPTON  
TILLIE SMITH  
PAULINE RAY

*Fifth Row*  
MARY HEDRICK  
ANNIE TATUM  
ANNE CLARK  
EVA MOSES  
BEA SUMNER

# THE MEYNELL LITERARY SOCIETY

*"The footfalls of her Muse wake not sounds, but silences."*

—FRANCIS THOMPSON.

The Meynell Literary Society, begun last year for the furtherance of literary activities in the high school classes, continued to progress towards its high objective. The monthly meetings were well attended and the programs were most entertaining.

Next year the Club hopes to add a Poets' Division, in which the young versifiers will receive ample opportunity to discover or cultivate their talents.

## MEMBERS

### *First Row*

DOLLY DUNN  
 MARY K. KABAS  
 BRIDIE MADDEN  
 VIVIAN HAVERTY  
 JOY GILBERT  
 MARY FAY SPENCER  
 DOROTHY HOGAN  
 MARGARET HARRISS  
 VIOLETA DEL CUETO

ANITA MARISTANY  
 ANNE CLARK  
 MARGARET REISER  
 MARTHA SEAY

### *Second Row*

BEA SUMNER  
 EVA MOSES  
 MARJORIE ROPER  
 NELIDA MOLINA  
 MARY HEDRICK

ANNIE TATUM  
 MARGARET MCKNIGHT  
 ELLEN BRYANT  
 MARGARET DAVIS  
 ANNE TIPTON  
 MARY E. PALMER  
 MARGHARITA MARUS  
 TILLIE SMITH  
 MARIE MARISTANY  
 MATTIE VAUGHAN





## DIETETICS CLASS

### MEMBERS

BEATRICE SUMNER

ANNIE TATUM

MARY HEDRICK

EVA MAE MOSES

BRIDIE MADDEN

MARJORIE ROPER

VIVIAN HAVERTY

## THE GLEE CLUB

This year marked the introduction of a Glee Club at Sacred Heart. The organization was placed under the expert guidance of Mr. Houren, who inspired the members with enthusiasm for speedy progress in choral work.

The club made its debut on December 15 in a combined concert with the students of Belmont Abbey College, a presentation which was considered exceptionally well rendered. With the growth of proficiency, the Club steadily increased its repertoire. On May 5 it was able to produce successfully the Japanese operetta, "Princess Chrysanthemum." The triumphant year ended on June 5th when the Club again joined the Abbey Glee Club to present the final program of the season.

It is safe to predict that next fall this newly-organized club will attain even greater success. The foundation is well laid and the resultant edifice will, from all indications, have strength and beauty.

*First Row:*

JEANETTE KENDRICK  
DOROTHY HOGAN  
ELMENA LATIMER  
BRIDIE MADDEN  
MR. J. B. HOUREN (*Director*)  
NELIDA MOLINA  
MARY ELIZABETH MOOR  
MATTIE VAUGHAN  
MARTHA SEAY  
MARGHERITA MARUS

*Second Row:*

BEATRICE SUMNER  
VIOLETA DEL CUETO  
DORIS HOPE  
EDITH GALLAGHER  
MARY ELIZABETH PALMER  
MARY KATHERINE KABAS  
ANITA MARISTANY  
MARIA MARISTANY  
CONSUELO DEL CUETO  
MARGARET O'MEARA

*Third Row:*

DOLLY DUNN  
VIVIAN HAVERTY  
EDITH ADAMS  
EVA MAE MOSES  
ANN MCLEAN  
ANNE CLARK  
FRANCES ARMSTRONG  
JOY GILBERT  
ELLEN BRYANT  
PAULINE RAY  
BETTY PRESSLY





## DRAMATIC CLUB

This year's Dramatic Club has, we feel, done outstanding work. Its first presentation, "The Madonna of the Rose," was conspicuous for its true beauty and the study in faith which it portrayed. "Pilate's Daughter," a sacred drama given during Holy week, was most inspiring and was considered one of the best ever produced in this community. Besides these major productions, the Club presented various other plays which were received most favorably.

We are proud of the splendid record of our Club and wish for it an even brighter future.

### MEMBERS

*First Row*

FRANCES ARMSTRONG  
 SUSAN RICHARDSON  
 MARGARET O'MEARA  
 ANNE MCLEAN  
 BETTY PRESSLY

*Second Row*

MARY K. KABAS

ELMENA LATIMER  
 FRANCES PRATT  
 JEANETTE KENDRICK  
 EDITH ADAMS  
 VIVIAN HAVERTY  
 MARY ELIZABETH MOOR  
 EDITH GALLAGHER  
 DORIS HOPE



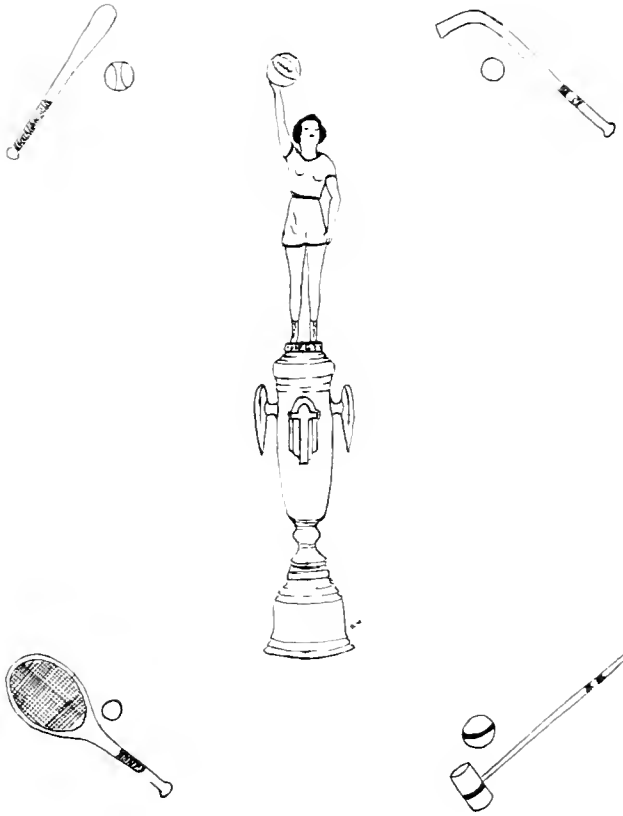
*Scenes from "Pilate's Daughter."*

A Scene from "The Madonna of the Rose"—Anne McLean personating the Madonna.



The Cast of "Princess Chrysanthemum," a Japanese Operetta.





# ATHLETICS

## VARSITY TEAM



WELDON  
GALLAGHER

LUTZ

MR. PARRISH

WELLS

PARTRICK

ADAMS

## THE BASKETBALL CLUB

Sacred Heart's accomplishment on the basketball court this year was characterized by more signal success than it has yet experienced, an accomplishment of no mean proportions considering the fact that last year Sacred Heart won all but three games on its schedule. This year's attainment reached its zenith in the winning of a trophy in the Gaston County Tournament and the placement of two players on the All-County Team.

The coach, Mr. Parrish, has proved himself a patient teacher, a far-seeing guide, and a director satisfied only with the best. These qualities, coupled with the hearty co-operation of the members of the Club, has elicited the admiration not only of the team but of all those who happened to witness his skill. The expert coaching and the building up of a spirit of goodwill put the team on a firm basis and material progress was sure to follow.

## BASKETBALL CLUB

*First Row:*  
 FRANCES SAWYER  
 MARGARET O'MEARA  
 MARY KATHERINE KABAS  
 EDITH GALLAGHER  
 EVA MAE MOSES  
 FRANCES SULLIVAN

*Second Row:*  
 DOLLY DUNN  
 HELEN HAND  
 BRIDIE MADDEN  
 MIRIAM WELDON (*Captain*)  
 BETTY PRESSLY  
 ANN MCLEAN  
 SUSAN RICHARDSON

*Third Row:*  
 MR. M. A. PARRISH (*Coach*)  
 CLARICE WELLS  
 VIRGIE LUTZ  
 EDITH ADAMS  
 ELLEN BRYANT  
 MARGARET PARTRICK  
 VIVIAN HAVERTY



## SOFTBALL CLUB

*First Row:*  
 DOLLY B. REDWINE  
 MARY B. HOWARD  
 EVELYN GRASS  
 BETTY TATTERSOLL

*Second Row:*  
 FRANCES SAWYER  
 GLORIA GASPARD  
 FRANCES SULLIVAN

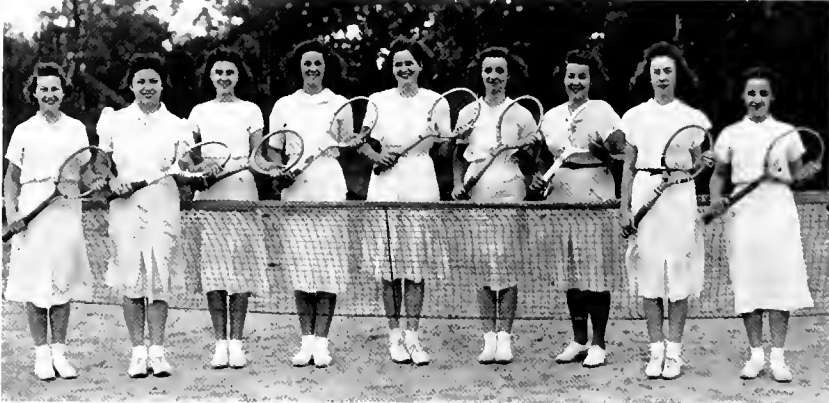
CLARA MARTIN  
 MARY BEVERLY WILSON  
 VIRGINIA KREOSON  
 BETTY MARTIN

## TENNIS CLUB

EDITH GALLAGHER  
JEANETTE KENDRICK  
LOUISE SMITH

VIVIAN HAVERTY  
JOY GILBERT  
PAULINE RAY

HELEN HAND  
ELMENA LATIMER  
CONSUELO DEL CUETO



## HOCKEY CLUB

MATTIE VAUGHAN  
NELIDA MOLINA  
MARTHA SEAY  
HELEN BROWN

ELLEN NEW  
DOLLY DUNN  
MARY KATHERINE KABAS  
FRANCES SAWYER



## MONOGRAM CLUB

The Monogram Club purposes to stimulate an interest in games, to create a spirit of good sportsmanship, and to assist in maintaining and furthering high standards in school life.

To attain membership in this club, it is necessary to merit a "Student's Letter"—a goal to which all athletes aspire.

EDITH GALLAGHER  
MIRIAM WELDON  
HELEN HAND  
MARGARET PARTRICK

EDITH ADAMS  
CLARICE WELLS  
VIRGIE LUTZ  
ANN MCLEAN





---

---

# ADVERTISEMENTS

---

---

Statement of Condition

# American Trust Company

MEMBER FEDERAL RESERVE SYSTEM

CHARLOTTE, N. C.

DECEMBER 31, 1938

RESOURCES

Cash in Vault, on Deposit in Federal Reserve Bank and in Other Banks	\$29,083,774.83	
U. S. Government Obligations, Direct or Fully Guaranteed	15,702,988.67	
Federal Land Bank, Federal Home Loan Bank and Listed Bonds	1,734,871.25	
State of North Carolina and State of South Carolina Bonds	3,866,497.89	
Municipal Bonds and Notes	2,082,283.40	
Loans Eligible for Rediscount by Federal Reserve Bank	4,611,914.03	
Loans Secured by Listed Stocks and Bonds	3,181,642.87	
Accrued Interest on Bonds	168,959.03	\$60,432,941.97
Other Loans		7,356,382.42
Cash Surrender Value Life Insurance Policies Carried due the Officers of the Bank		66,835.05
Stock Federal Reserve Bank, Richmond, Va., and Other Stocks and Bonds		83,337.92
Banking House, Fourth Street Property, and Furniture and Fixtures	490,218.55	
Reserve for Depreciation	124,412.29	365,806.26
Other Real Estate (The appraised value of which is \$185,071.50 and the assessed value of which is \$138,109.37)		92.00
Other Assets		10,379.18
		\$68,315,764.81

LIABILITIES

Capital Stock		\$ 1,200,000.00
Surplus	\$ 1,500,000.00	
Undivided Profits	684,195.91	
Reserves—Unallotted	450,000.00	2,634,195.91
Interest Collected but not Earned	37,963.04	
Reserve for Taxes and Contingencies	617,783.15	655,746.19
DEPOSITS		63,825,822.70
		\$68,315,764.80

OFFICERS

W. H. WOOD, *President*

T. E. HEMBY <i>Executive Vice-President</i>	F. W. DEARMON <i>Assistant Secretary and Treasurer</i>
JOHN FOX <i>Vice-President and Trust Officer</i>	W. M. PORTER <i>Assistant Secretary and Treasurer</i>
R. E. KERR <i>Assistant Vice-President</i>	J. P. ROBINSON <i>Assistant Secretary and Treasurer</i>
C. B. CAMPBELL <i>Secretary and Treasurer</i>	J. E. HENLEY <i>Assistant Secretary and Treasurer</i>

Member Federal Deposit Insurance Corporation

Assets and Liabilities of Insurance Department not shown in above Statement



Established 1870

**C. D. KENNY COMPANY**  
*Teas, Coffees and  
Sugars*



Ask Your Grocer  
415-419 W. Third Street  
CHARLOTTE BRANCH

**HAVERTY**  
**FURNITURE Co.**

227 N. Tryon St.  
CHARLOTTE, N. C.

+

*Complete  
Home  
Furnishers*

+

*Remember*  
IT'S EASY TO PAY  
THE HAVERTY WAY

CHAS. A. WILLIAMS, JR., *President*  
MRS. CHAS. A. WILLIAMS, SR., *Secretary*  
J. LAVER WILLIAMS, *Vice-Pres. and Treas.*  
C. W. RAMSEY, *Credit Manager*

*Distributors of*

**W and S**  
**Merchandise of  
Magical Value**

+

**WILLIAMS & SHELTON  
COMPANY, Inc.**

CHARLOTTE, N. C.

**The  
George Vanderbilt  
Hotel**

ASHEVILLE, N. C.

+

LEONARD E. JONES, *Mgr.*

★ REMEMBER . . .

*You Always Save at*

**BELK  
BROTHERS  
CO.**



"CHARLOTTE'S HOME

OF

BETTER VALUES"

# Gastonia Ice Cream Co.

*Manufacturers of*

**"Honey-Kist"**  
Ice Cream

GASTONIA, N. C.

# GOODNIGHT BROTHERS

*Wholesale*

FRUITS & VEGETABLES

+

310 East Main Avenue

GASTONIA, N. C.

# Hinson Coal Co.

*(Formerly Carolina Coal Co.)*

*"Berwind's"*  
*Smokeless Coals*

428 South Mint St.

PAT HINSON, *Mgr.*

CHARLOTTE, N. C.

# Morris & Barnes

*Incorporated*

*Market of Quality*

FRESH MEATS - SEA FOOD

FANCY GROCERIES

●

DIAL 3-1116

●

227 W. Trade St.

CHARLOTTE, N. C.

THOMAS GRIFFITH, *President*

THOMAS C. HAYES, *Treasurer*

# Thomas Griffith & Company

INSURANCE HEADQUARTERS

ESTABLISHED 1875

+

Offices 508-515 Commercial Building

CHARLOTTE, N. C.

INSURE WITH  
"INSURANCE HEADQUARTERS"

+

---

*We Insure Anything, Anywhere—Except Your Life*

**Pound & Moore  
Company**

Manufacturing Stationers  
Office Outfitters  
Printers

+

213 SOUTH TRYON STREET

CHARLOTTE, N. C.

**Queen City Mattress  
& Upholstering  
Company**

*Manufacturers*

*Inner Spring & Cotton  
Felt Mattresses  
Living Room  
Furniture*

1215 South Caldwell Street  
CHARLOTTE, N. C.

**Carolina Absorbent  
Cotton Co.**

+

*Hospital Supplies  
Surgical Dressings*

+

CHARLOTTE, N. C.

**Carolina Baking  
Company**

*Bakers of*

*O Boy Vitamin D  
Bread and Better  
Made Cakes*

CHARLOTTE, N. C.

●

# Clinchfield Fuel Co.

SPARTANBURG, S. C.

●

# SOUTHEASTERN CONSTRUCTION COMPANY

218 West Second Street

CHARLOTTE, NORTH CAROLINA

# *Bridges* FURNITURE CO.

*You Will Always Find  
Warmth and Friendliness  
at BRIDGES*

+

308 S. TRYON ST.  
CHARLOTTE, N. C.

# Smith-Wadsworth Hardware Company

+

428-430 SOUTH TRYON ST.

PHONE 3-5161

CHARLOTTE, N. C.

# Winchester Surgical Supply Co.

*"Carolinas' House of Service"*

*Hospital & Physicians  
Equipment & Supplies*

+

106 E. Seventh St., Telephone 4109  
CHARLOTTE, N. C.

# M. B. SMITH *Jewelers*

Incorporated

105 EAST TRADE STREET

CHARLOTTE, N. C.

# “Let’s Go Modern— It’s Really Cheaper”

The progressive family that today is using electricity for refrigeration, for cooking and for water heating is not only enjoying the manifold advantages of these automatic home services, but they are actually saving more money. They are living better, more comfortably, without the drudgery, labor and worry that attend the old methods—they are actually LIVING BETTER for LESS.

It costs the average family less per day than the cost of a single loaf of bread to cook electrically. Automatic hot water service through an electric automatic water heater is available also to the average family for less than the price of a package of cigarettes per day.

The cost of electric automatic refrigeration to the average family is little more than the cost of a package of chewing gum per day.

*Electric refrigeration, electric ranges, electric water heaters—any of these appliances of the makes you are likely to desire may be had on terms to fit your budget. Easy to buy — inexpensive to operate — and yet they bring indescribable comfort and freedom from work and worry.*



## Duke Power Co.



Established 1912

## Southern Fruit Co.

Incorporated

Wholesale Dealers In

**FRUITS**

419-421-423-425 W. Second St.

CHARLOTTE, N. C.

## Interstate Milling Company

*Manufacturers of*

*High Grade Flour,  
Grits, Meal, Poultry,  
Dairy, Horse and  
Hog Feeds*

CHARLOTTE, N. C.

## Hardaway-Hecht Company

*Wholesale Grocers*

+

CHARLOTTE, N. C.

## F. H. Ross & Co.

Incorporated

1649 W. Morehead St.

CHARLOTTE, N. C.

+

637 Whitehall St. S. W.

ATLANTA, GA.

## Nance Drug Store

PRESCRIPTION DRUGGISTS

+

Caswell Road and Fifth St.

CHARLOTTE, N. C.

*Compliments of*

## Lisk Pharmacy

826 E. Trade St. Charlotte, N. C.

DIAL 2-2137

## Lisk Pharmacy

NO. 2

2204 Avondale Ave. Charlotte, N. C.

DIAL 3-2168

+

Motorized Delivery to all parts of City

## Horne-Wilson, Inc.

+

*Plumbing Fixtures —*

*Heating Equipment*

*Pipe-Valves-Fittings*

*Sheet Metal-Roofing*

+

314 W. FIRST ST.

CHARLOTTE, N. C.

## Norfleet Motors Company

Incorporated

Dodge Brothers and

Plymouth Motor

Vehicles

FIFTH AND POPLAR STREETS

CHARLOTTE, N. C.

# Louis G. Ratcliffe

Incorporated

*Florist*

+

CHARLOTTE, N. C.

# Pritchard PAINT & GLASS Company

*Wholesale and Retail*

*Paints, Glass and  
Painters' Supplies*

Telephone 6148

CHARLOTTE, N. C.

# Thomas & Howard Company

*Wholesale Grocers*

+

CHARLOTTE, N. C.

# Harris Food Store

1508 Central Ave.

Telephone 3-6696

CHARLOTTE, N. C.

+

WE DELIVER

*Larkwood Silk Hosiery  
Mills, Inc.*



*Manufacturers of*

LADIES FULL FASHIONED SILK HOSIERY

CHARLOTTE, N. C.



NEW YORK OFFICE

385 5TH AVE.

## W.H.ArthurCompany

Contractors—Dealers

Manufacturers

SHEET METAL  
ROOFING - HEATING

Barrett and Johns-Manville  
Approved Roofers

P. O. Box 1687  
ASHEVILLE, N. C.

## Citizens Transfer & Coal Company

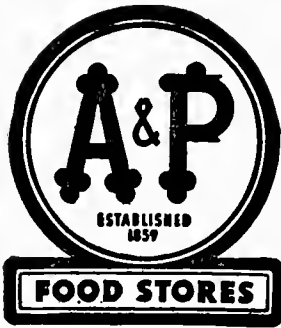
*Every Kind COAL*  
*Every Use*

JULIAN A. WOODCOCK, JR., *Mgr.*  
18 BATTERY PARK AVE.  
(Flat Iron Building)

Box 1266  
ASHEVILLE, N. C.

*Compliments of*

**A FRIEND**



The Great A & P  
Tea Co.  
FOOD STORES

COOKIE-CAKES,  
CRACKERS  
SUGAR WAFERS  
SPECIALTIES

The Strietmann Biscuit Co.  
CHARLOTTE, N. C.

Patronize  
Our  
Advertisers

*Printing and Binding*  
By the  
OBSERVER PRINTING HOUSE  
Charlotte, N. C.













